



# SADLER POWER TRAIN TRUCK PARTS & SERVICE

## CLUTCH APPLICATIONS



### 430mm Clutch for Volvo/Mack ISHIFT and M-DRIVE

#### NEW PART# 104460-1

1650 ft/lbs | 50x46x24N Spline | 6 Spring damper  
Can be used on AT2412, AT2512, AT2612 & ATO2612 transmissions

#### NEW PART# 104461-1

1850 ft/lbs | 50x46x24N Spline | 5 Spring damper  
Can be used on AT2412, AT2512, ATO2512, AT2612 & ATO2612 transmissions



### Automated Clutch Systems

The clutch systems of the UltraShift®, UltraShift® PLUS and Fuller® Advantage Series transmissions are a fundamental piece of these transmission upgrades.



#### DM Clutches:

- Centrifugal design relies on engine RPM for engagement.
- Provides smooth engagement.

#### NEW PART# 121000-1

#### REMAN PART# MU121000



#### ECA Clutches:

- Ensure performance and efficiency with new Electric Clutch Actuation and intelligent shift selection software.
- Enables better launch and shift decisions through grade sensing, weight computation and driver throttle commands.

#### REMAN PART# MU122002



### Gray Heavy Duty Jack – PART# 362

Gray Manufacturing's TCJ-500 heavy duty component jack features a 360° rotating head allowing flexibility and convenience during installation and removal of clutches. The hydraulic power system provides precise adjustment and the swivel casters permit easy movement.

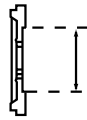


# Heavy Duty Clutch Selector

**1** Self-adjusting clutches are recommended for trucks with hydraulic linkage to reduce the risk of drivetrain damage.

						Best		Better		Good				
						Original Equipment Specifications (Pre-damper suffix in parentheses)		Aftermarket Specifications		Remanufactured				
Spline Dia. – No. of Splines	Flywheel Bore Opening	No. of Springs / Damper Type	Clutch Torque lb-ft (must equal or exceed engine torque)	Facing		Advantage® Self-Adjust	Easy Pedal Advantage® Manual Adjust	EverTough® Self-Adjust	EverTough Manual Adjust	Solo® Self-Adjust	Easy Pedal® Manual Adjust			
15.5 inch	2" – 10	8	1400	4					108391-81AM		108391-81MO			
				Organic						108391-82MO				
	10"	9 (Mack and Volvo 11L & 13L)	7	1650	4	309701-51	308925-51	109701-51AM	108935-51AM		109700-74MO	108391-74MO		
				1760	4				108935-61AM	109700-61MO	108935-61MO			
				1850	4	309701-68	308925-68							
				1650	6	309701-91	308925-91			108935-91AM	108935-91MO			
				1760	6			109701-92AM						
				1850	6	309701-98	308925-98							
				1700	4	309701-82	308925-82	109701-82AM	108925-82AM	109700-82MO	108935-82MO			
				7 / VCT Plus®	1750	4	309701-24 (-34)	308925-24 (-34)						
					1860	4	309701-23	308925-23						
					1860	6	309701-20 (-30)	308925-20 (-30)						
				7	1860	6					109701-20AM	108925-20AM	109700-20MO	108935-20MO
					2050	6					109701-25AM	108925-25AM	109700-25MO	108935-25MO
				7 / VCT Plus	2050	6	309701-25 (-35)	308925-25 (-35)						
2" – 14	10"	7 / VCT Plus	2250	6	309708-32 (-42)	308937-32 (-42)								
14 inch	1.75" – 10	8	1400	4			108063-59							
			950	6			108334-6							
	2" – 10	7	8	1000	3	N/A		N/A		N/A	108034-61MO			
				1150	Organic						108034-82MO			
				1400	4			108050-59B		108050-59AM	108050-59MO			

**2** Choose size of your cast two-plate heavy-duty clutch. **3** Determine flywheel bore opening and select number of springs. **4** Choose clutch torque. Rating in chart must be equal to or exceed engine torque rating. **5** Narrow clutch choice based on options. All part numbers in row meet your specs. **6** Choose from new or remanufactured.



Choose size of your cast two-plate heavy-duty clutch.

Determine flywheel bore opening and select number of springs.

Choose clutch torque. Rating in chart must be equal to or exceed engine torque rating.

Narrow clutch choice based on options. All part numbers in row meet your specs.

Choose from new or remanufactured.

<b>Advantage Series</b> <ul style="list-style-type: none"> <li>• Strap drive intermediate plate</li> <li>• Spring separator system</li> <li>• Original equipment specification</li> <li>• 3 year/unlimited mileage warranty</li> <li>• 50,000 mile lube interval</li> </ul>
<b>EverTough</b> <ul style="list-style-type: none"> <li>• Aftermarket specification</li> <li>• 2 year/unlimited mileage warranty</li> <li>• 25,000 mile lube interval</li> </ul>
<b>Remanufactured</b> <ul style="list-style-type: none"> <li>• Economy</li> <li>• 1 year/unlimited mileage warranty</li> <li>• Longer service life compared to rebuilt</li> <li>• Dual zerk</li> </ul>

Eaton Clutch for Automated Transmission		
Product	Part No.	Clutch Torque lb-ft (must equal or exceed engine torque)
Heavy-duty DM Clutch	121000-1	1750
Heavy-duty ECA Clutch and LCIB	122002-35A	1850
	122003-42A	2250
430mm Clutch for Volvo/Mack	104460-1	1650
	104461-1	1850

**Advantage Series 7-spring VCT Plus** – Eaton's premium damper, high torque capability with best-in-class vibration control

**Advantage Series Pre-Dampers** – effective at quieting neutral gear idle rattle (Pre-damper suffix in parentheses in the table above)

Estimated shipping weights: 15.5" = 150 lbs, 14" = 110 lbs

## SERVICE SMARTS



### Flywheel Resurfacing

It is strongly recommended that when a clutch is replaced the flywheel should be resurfaced. This ensures the removal of any shudder causing "hot spots" and uneven surfaces

We can machine almost any type of flywheel: heavy duty commercial trucks, light and medium duty vehicles, and agricultural equipment.

In most cases, we can resurface your flywheel while you wait.



**Cedar Rapids**  
800-383-8238

**Davenport**  
800-383-4213

**Dubuque**  
800-747-0752

**Waterloo**  
800-373-3035

**"The Power of Service"**

[www.sadlerpowertrain.com](http://www.sadlerpowertrain.com)

